



Process Design & Commissioning

P&ID Reviews · System Engineering · Control Philosophies ·
Control System Selection · Loop Tuning · Plant Start-up Assistance



Project Team Participation

Have you seen projects that struggle to deliver performance expectations? Do your projects often seem to spawn many subsequent projects to address the details that were missed in the original design? Is your process difficult to control despite having invested in a state-of-the-art automation system? Was your process designed by an engineering team who had never actually run a plant? Are your regulatory loops performing and 'auto' or are they in manual?

Owing to our experience with operating milling / metallurgical processes, and our participation in project teams, we adhere to the *Effective Process Control Cycle (shown below)*. This cycle ensures consideration of plant control & operability aspects in the project engineering process and appropriate commissioning of all associated instrumentation, controls and control systems.

Plant *automation* is often seen as the project deliverable, when what is really required is plant & *process control*. By placing the appropriate *process control* resources on your project team, you will leverage the power provided by your automation system, resulting in your plant producing at design capacity sooner.

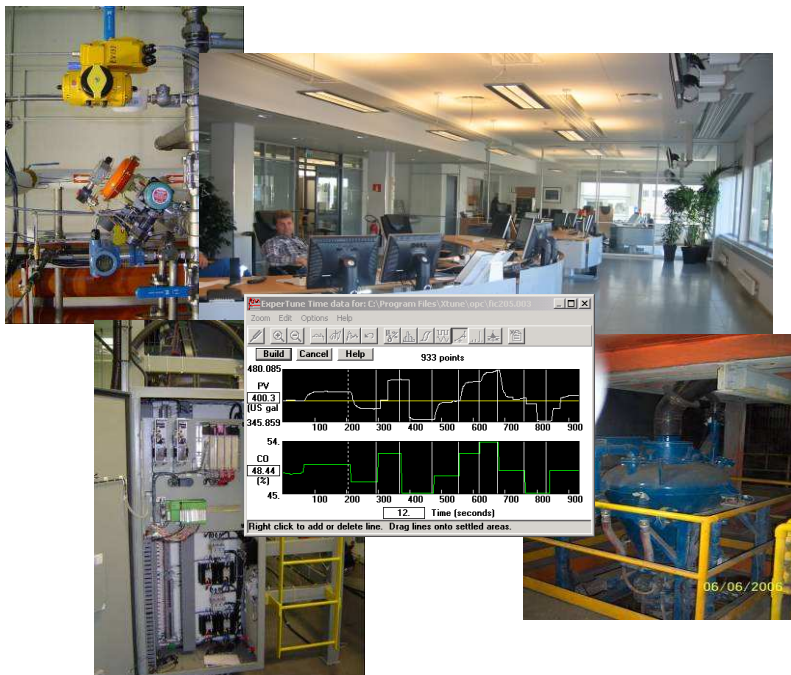
The above can be achieved by placing the appropriate *controls* resource directly on the project team, or through a staged review process. This review process can continue right through the construction and commissioning phases.

Services

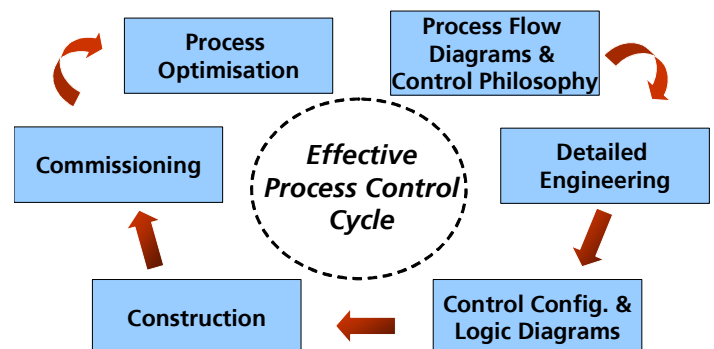
- P&ID Design and / or Review
- HAZOPS.
- Control Philosophy & Strategy Development.
- Functional Specification Review
- Logic & Logic Diagrams
- Alarm Strategy Development & Specification
- Peer Reviews
- Control System Specification / Selection
- Commissioning Services
- Loop Tuning / Training
- Performance / Entitlement Assessment
- Process Optimisation

Project Participation Examples

- CCR Refinery: Sb+Bi HCl Recovery Column
- Collahuasi Mill / Port Facilities
- HPAL & Caron Piloting
- Kidd Creek Mill : Montcalm Circuit
- Kidd Creek Mill : Zn Flot. Circuit Level Controls
- Kidd Creek Cu Refinery : Control System
- Kidd Creek Cu Smelter: Limestone Injection
- Kidd Creek Cu Anode Furnace: Nat. Gas Red.
- Koniambo : NST Project
- Laterite & Sulphide Ore Roaster Piloting
- Ni Smelter : Calciner
- Ni Smelter : Montcalm Receiving
- Nikkelverk Control Room Amalgamation
- Xstrata Cu Standard Concentrator Design : Trade off study review and feedback
- Xstrata Ni : Kabanga Mill



Prefeasibility -> Feasibility -> Detailed Design -> Commissioning -> Plant Optimisation



Contact Us...

www.myxps.ca

[Address] Process Control Group, XPS Centre, 6 Edison Road, Falconbridge, Ontario, P0M 1S0, CANADA
 [Phone] +1 (705) 699 3400 Ext. 3463 / 3442 / 3757 / 3427 [Fax] +1 (705) 699 3431
 [E-Mail] processcontrol@xstrataprocesupport.ca or info@xstrataprocesupport.ca

